

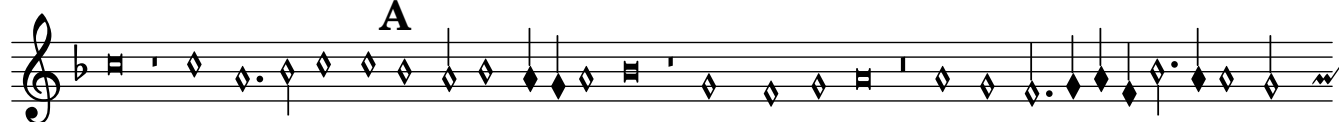
Tota pulchra es

Superius

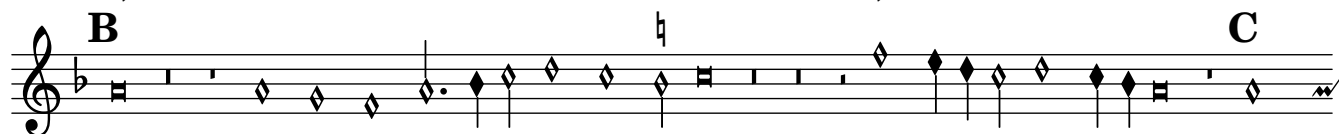
Heinrich Isaac (1450-1517)



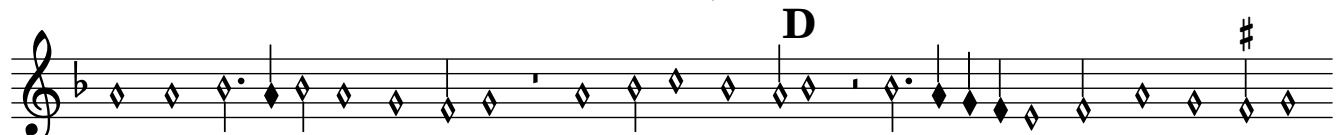
To - ta pul - chra es, a - mi - ca me - -



a, et ma - cula non est in te; fa - vus di - stil -



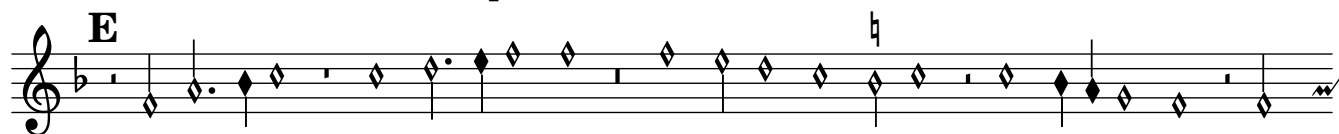
lans la - bi - a tu - a; mel et lac sub



lingua tu - a; o - dor un - guento - rum



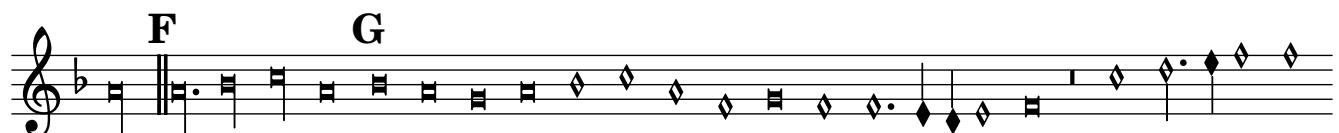
tu - o - rum super o - mni - a a - ro - mata:



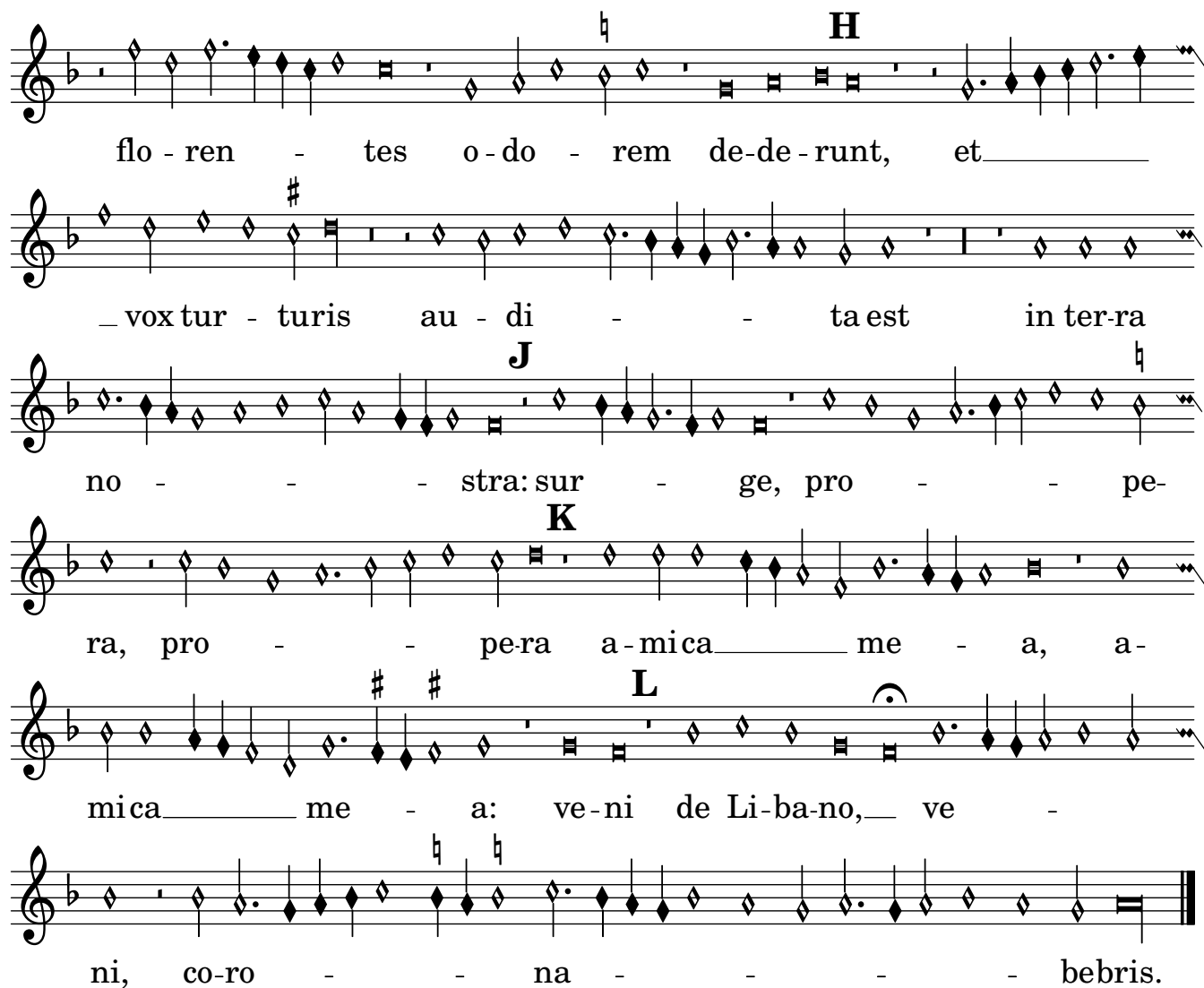
iam e - nem hi - ems trans - i - it, im -



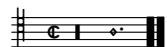
ber ab - i - it et re - ces - - -



sit Flo - res ap - pa - ru - e - runt vi - ne - ae



flo - ren - tes o - do - rem de - de - runt, et
 _ vox tur - turis au - di - - - ta est in ter - ra
 no - - - - - stra: sur - ge, pro - - - - - pe -
 ra, pro - - - - - pera a - mica - - - - - me - a, a -
 mica - - - - - me - a: ve - ni de Li - ba - no, - - - - - ve -
 ni, co - ro - - - - - na - - - - - bebris.



Tota pulchra es

Contratenor

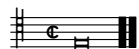
Heinrich Isaac (1450-1517)

To - ta pul - chra, pul - chra es, a - mi -
 ca me - a, et ma - cula non est in
 te; fa - vus di - stillans la - bi - a tu - a,
 tu - a; mel et lac, et lac
 sub lingua tu - a; o - dor un - guento - rum tu -
 o - rum super o - mnia,
 o - mnia, o - mni - a a -
 ro - mata: iam enem hi - ems

L

a: ve - ni de Li-ba-no, ve - - ni, co-ro -

na - - - - - be - ris.



Tota pulchra es

Tenor

Heinrich Isaac (1450-1517)

To-ta__ pul - chra es, a - mi-ca me - - -

A
a, et ma - cu-la_____ non est in te; fa - vus__ di - stil-

B
lans la - bi - a__ tu - a, tu - - a; mel et lac

C **D**
sub lingua__ tu - a__ o - dor unguento - rum tu-

E
o - rum super__ o - mni - a__ a-ro - mata;

iam__ e-nem hi - ems trans - i - it__ im - ber ab - i - it et__

F **G**
- re - ces - sit; Flo - res ap - pa - ru - e-

- runt__ vi - ne - ae florentes__ o - do - rem, o - do -

rem de-de - runt, et vox tur - turis au -
di - ta est in, in ter-ra no - stra: sur -
- ge, pro - pe-ra a-mi-ca me - a, a-mi-ca me - a:
ve-ni de Li-ba-no, ve-ni, co-ro-na - - - be-ris.



Tota pulchra es

Bassus

Heinrich Isaac (1450-1517)



To-ta pul - chra es, a - mi - ca

A



me - a, no est in te; fa-vus di - stil - lans la - bi-

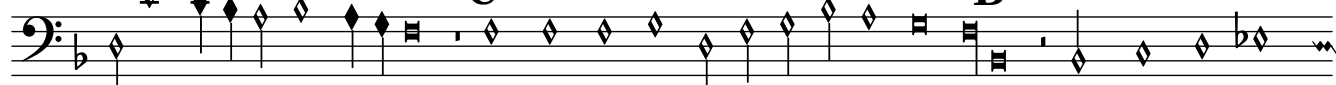
B



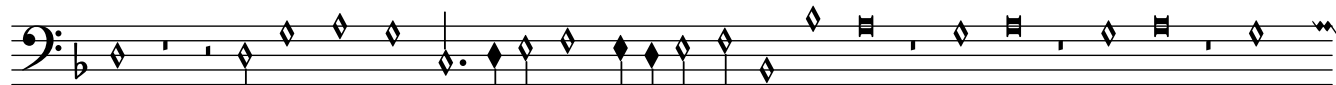
a tu - a, tu - a; mel et

C

D

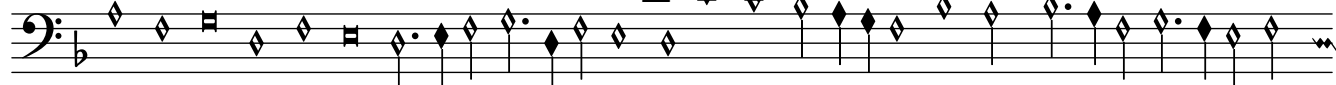


lac sub lingua tu - a; o - dor unguento -



rum tu-o - rum super, su-per o-

E



mni - a a-ro - mata: iam enem hi - ems



trans - i-it im - ber ab-i-it et reces - sit: Flo - res ap-

G



pa - ru-e - runt vi - neae floren - tes o-

do rem dede - runt, et

vox tur - tu - ris audi - ta, au - di - ta est in

ter-ra nostra: sur - ge, pro -

- pera a-mi-ca me - a, a--mi-ca me - a: ve-ni de Li-ba-

no, ve-ni, co-ro-na - beris.